



*Concrete Masonry*  
**BETTA BLOCK®**



**BAINES  
MASONRY**  
Quality First

*Australian Owned, Designed & Manufactured*



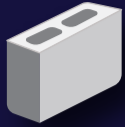
# Product Information: Betta Block®

## 100mm Series

### 90mm Thick Walls



**Hollow - Full Length**  
390x90x190mm  
Code 10-01



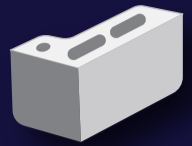
**Hollow - three quarter**  
290x90x190mm  
Code 10-02



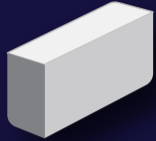
**Hollow - half**  
190x90x190mm  
Code 10-03



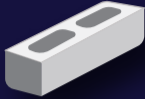
**Solid - quarter**  
90x90x190mm  
Code 10-04



**Hollow - corner return**  
390x190(x90)x190mm  
Code 10-25



**Solid - Full Length**  
390x90x190mm  
Code 10-31

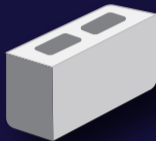


**Hollow - half high**  
390x90x90mm  
Code 10-71

Made with BETTA BLOCK® Technology...  
...Stronger, Cleaner & Greener!

## 150mm Series

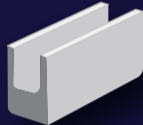
### 140mm Thick Walls



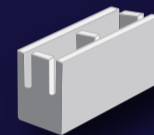
**Hollow - Full Length**  
390x140x190mm  
Code 15-01



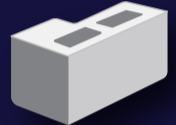
**Hollow - three quarter**  
290x140x190mm  
Code 15-02



**Lintel**  
390x140x190mm  
Code 15-12



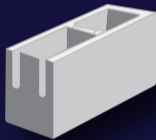
**Knock-out bond beam**  
390x140x190mm  
Code 15-20



**Hollow - corner return**  
390x190(140)x190mm  
Code 15-25



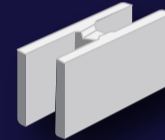
**Clean-out Stretcher**  
390x140x190mm  
Code 15-45



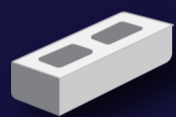
**Closed end**  
390x140x190mm  
Code 15-41



**Closed end - half**  
190x140x190mm  
Code 15-43



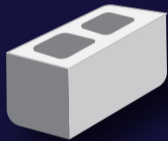
**'H' Block**  
390x140x190mm  
Code 15-48



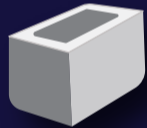
**Hollow - half high**  
390x140x90mm  
Code 15-71

## 200mm Series

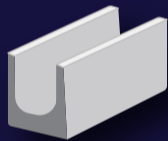
### 190mm Thick Walls



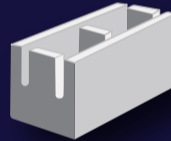
**Hollow - Full Length**  
390x190x190mm  
Code 20-01



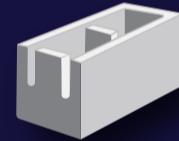
**Hollow - three quarter**  
290x190x190mm  
Code 20-02



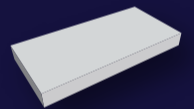
**Lintel**  
390x190x190mm  
Code 20-12



**Knock-out bond beam**  
390x190x190mm  
Code 20-20



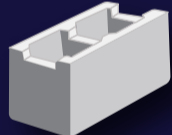
**Closed end**  
390x190x190mm  
Code 20-41



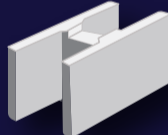
**195mm Capping Tile**  
390x195x40mm  
Code 50-31



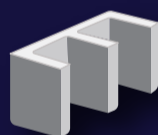
**Closed end - half**  
190x190x190mm  
Code 20-43



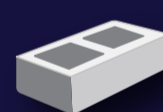
**Channel**  
390x190x190mm  
Code 20-42



**'H' block**  
390x190x190mm  
Code 20-48



**Clean-out stretcher**  
390x190x190mm  
Code 20-45

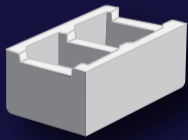


**Hollow - half high**  
390x190x90mm  
Code 20-71

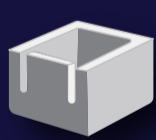


## 300mm Series

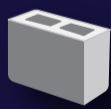
### 290mm Thick Walls



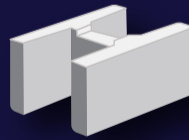
**Channel**  
390x290x190mm  
Code 30-42



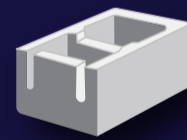
**Hollow - half**  
290x190x190mm  
Code 30-43 / 20-02



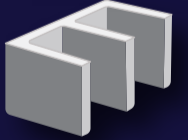
**Hollow - quarter**  
90x290x190mm  
Code 30-04 / 10-02



**'H' block**  
390x290x190mm  
Code 30-48



**Closed end**  
390x290x190mm  
Code 30-41



**Clean out stretcher**  
390x290x190mm  
Code 30-45

Colours displayed in this brochure are to be used as a guide only. Colours are as close as printing process will allow. Displays in store may vary to actual colour due to batch variations. Obtain samples from Baines Masonry for current batch colour. Care should be taken to order sufficient products to complete job at one time to avoid batch variation. Surplus blocks are not returnable. No claims after seven (7) days or once products have been incorporated in construction.

Refer to Evaluation and Installation Guide or website for specifications.  
Check with your local Council to ensure all local building codes are complied with.

Betta Block® is a registered trademark of Baines Masonry and is used under licence.  
Please see our full terms and conditions on our website [www.bainesmasonry.com.au](http://www.bainesmasonry.com.au)

Concrete Masonry Units manufactured by Baines Masonry are manufactured to AS/NZS4455.1 Masonry Units and Segmental Pavers and tested to AS/NZS4456 Masonry Units and Segmental Pavers/: Method of Test.

Member of



**BAINES MASONRY**  
900 Wilton Road (P.O. Box 89) Appin NSW 2560  
Tel: (02) 4631 1383 Fax: (02) 4631 1402  
[info@bainesmasonry.com.au](mailto:info@bainesmasonry.com.au)  
[www.bainesmasonry.com.au](http://www.bainesmasonry.com.au)